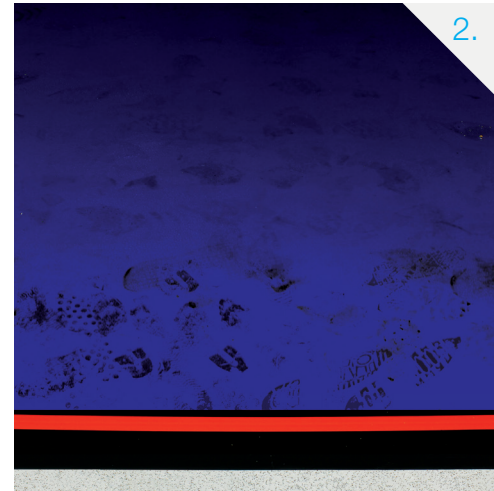


## CLEANING PROCEDURE - USING DILUTED DYCLEAN FOR DYCEM FIXED FLOORING



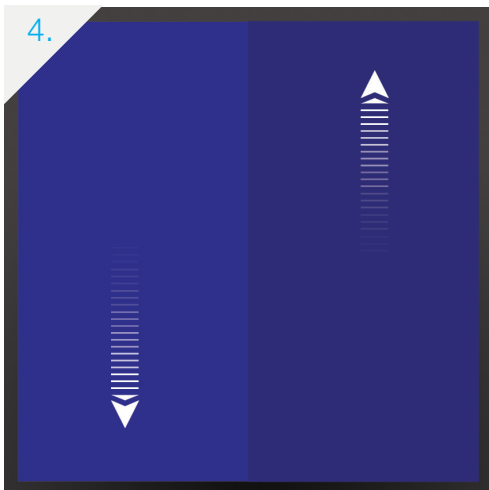
1. Clean flooring at least once a day to maximize its efficiency. We advise using Dyclean Cleaning Detergent (diluted) and a Vikon squeegee system.



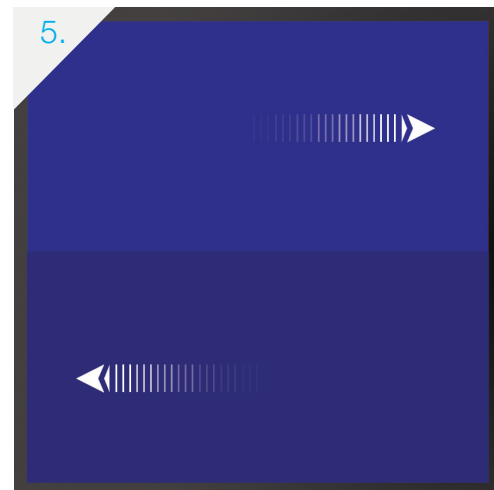
2. Spray the surface of the area with Dyclean or another recommended cleaning detergent.



3. Agitate the surface with the Vikon squeegee, until you begin to see the contamination being lifted.



4. Begin by cleaning in a vertical direction as shown.



5. Continue to agitate the surface in a horizontal direction as shown.



6. Remove the excess liquid or slurry from the edge of the surface, and collect with a microfibre mop or sponge system. If the removed liquid is dirty, repeat process or increase cleaning frequency.

### TIPS & ADVICE

- Clean at least once a day to improve cleaning efficiency, with the following:
  - Vikon squeegee system
  - Dyclean Cleaner diluted
- Or, use a Dycem approved cleaner (contact us for a full list) with warm water
- After cleaning, wash out the equipment so that it is ready for re-use
- To remove built-up spots of contamination, clean with a 70/30 isopropyl alcohol wipe
- Where decontamination or sterilization takes place using a phenolic or hydroxide, rinse off as per the instructions (left). Otherwise, a film can develop, reducing the effectiveness of the Dycem
- For heavily contaminated areas, please contact Dycem's customer service team, who will be happy to discuss the best solution with you
- **Do not use** concentrated bleaching agents, scouring or abrasive powders, or cleaning machines with stiff brushes. Buffing or polishing machines will damage the surface, shortening the active working life of the flooring
- If you have any questions or concerns, or would like a Dycem deep clean, please get in touch:

[info@dycemusa.com](mailto:info@dycemusa.com)

[www.dycem-cc.com](http://www.dycem-cc.com)

USA: 1-800 458 0060

Asia: [asia@dycem.com](mailto:asia@dycem.com)

UK: +44 (0)117 955 9921